



CDA Beyond **UPDATE** After School Enrichment

COMMUNITY DAY ARLINGTON ELEMENTARY
& ARLINGTON MIDDLE SCHOOL

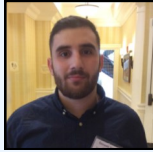
www.communitydaycare.org

FALL 2016

Program Staff



Kathy McDonough
Director,
21st Century
Program
978.609.4197



Gonzalo Silva
Program Manager,
CDA Beyond
After School
Enrichment Program
978.722.8306



Mary Ellen Dolloff
Assistant Director,
21st Century
Program
978.609.4197

"Education is the most powerful weapon which you can use to change the world."

- Nelson Mandela



Students work on their art projects at their weekly visit to the Essex Art Center

CDA Beyond After School Enrichment Program

At CDA Beyond, all of our programs are implementing a fun and engaging African theme where students are learning about African culture. This includes learning the dance and rhythm of their music in Music and Movement, and singing songs about African life in Chorus. Students are creating their own African masks and instruments during African Art, and Safari is taking a virtual trip through the jungle to discover and learn about African animals. At Kids In The Kitchen students are learning about African ingredients and cooking various African recipes.

As the most popular sport in Africa, Beyond Soccer is teaching students the skills they need to master soccer. At Storytelling, students are making African legends come alive. Spark, our team building and cooperative play program is teaching students to move like jungle

animals, and the African beats that are coming out of the Drumming class are incredible! On Thursdays, the students in Essex Art and Acting Out! go off site to their studios where they are creating an African mural and practicing various parts of the play The Lion King.

CDA Beyond also is offering Fun Fridays! The children participate in two exciting programs each week, including dance, Spark, yoga, coding, Girl Scouts, music and movement, art and improv.



Students work on designing their own rain sticks.

About Our Programs

Community Day Learning (Community Day Care), is a program of The Community Group. CDA Beyond After School Enrichment Program represent a partnership between Community Day Learning and Lawrence Public Schools. Through our early learning centers and network of home care providers, Community Day Learning offers continuity of care from infancy through 12 years. Students enrolled in our infant/toddler program may progress to a preschool/kindergarten program to a school age program. This continuity of care in our high quality programs can be an important factor in the positive development of our students.

Community Day Learning School Age Programs:

Arlington • Bruce • Frost • Guilmette • Parthum • South Lawrence East • Tarbox • Wetherbee • Methuen



CDA Beyond **UPDATE** After School Enrichment

COMMUNITY DAY ARLINGTON ELEMENTARY
& ARLINGTON MIDDLE SCHOOL

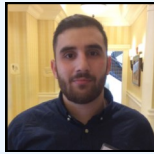
www.communitydaycare.org

OTOÑO 2016

Personal del Programa



Kathy McDonough
Directora, Programa
21st Century
978.722-2528



Gonzalo Silva
Gerente del Programa
CDA Beyond
After School
Enrichment Program
978.722.8306



Mary Ellen Dolloff
Directora Asistente, Programa
21st Century
978.722-2528

"La educación es el arma más poderosa que puedes usar para cambiar el mundo."

- Nelson Mandela



Los estudiantes trabajan en sus proyectos de arte en su visita semanal al Essex Art Center.

CDA Beyond Programa de Enriquecimiento Después de la Escuela

A medida que cerramos la segunda sesión, los estudiantes de CDA Beyond estaban encantados de celebrar todo lo que aprendieron con sus padres durante la demostración del estudiante el 23 de marzo.

Al final de la segunda sesión, los estudiantes de simulacros de juicio llevaron a cabo su juicio en el Centro Judicial de Fenton. Los estudiantes llegaron a la corte vestidos en atuendos profesionales y listos para persuadir al jurado y al juez. Nos sentimos muy orgullosos por el fantástico trabajo que realizaron. También nos gustaría agradecer a nuestros voluntarios de miembros del jurado y especialmente, los voluntarios de la corte. El simulacro de juicio no habría sido igual sin el trabajo del Honorable Mark Newman, abogado John O'Brien y Sub Fiscales Laura Shadallah y Katherine Fennel Kelly. Los estudiantes de simulacros de juicios también recibieron un tratamiento especial. Ellos tomaron una excursión a las Finales de Simulacros de Juicios de la barra

de Massachusetts en Faneuil Hall de Boston. Los estudiantes quedaron impresionados por los estudiantes de la secundaria que compitieron y también tomaron ventaja de estar en la ciudad y visitaron la iglesia del norte vieja, la casa vieja del estado, el sitio de la masacre de Boston (que fue el tema de nuestro juicio simulado), y la casa de Paul Revere.

La tercera sesión se inició el lunes 28 de marzo con algunos nuevos programas incluyendo Construir con Chrome, Sistema Solar, Los Planetas y La Exploración, y el Scrapbooking. Los estudiantes también irán fuera del sitio para las actividades de diversión en el Centro de Arte de Essex, a nadar en el Club de Niños y Niñas, y para actuar en el Acting Out. ¡No podemos esperar a ver todas las cosas nuevas que los estudiantes aprenderán esta sesión!



Los estudiantes trabajan en el diseño de sus propios palos de llovias.

About Our Programs

Community Day Learning (Community Day Care), is a program of The Community Group. CDA Beyond After School Enrichment Program represent a partnership between Community Day Learning and Lawrence Public Schools. Through our early learning centers and network of home care providers, Community Day Learning offers continuity of care from infancy through 12 years. Students enrolled in our infant/toddler program may progress to a preschool/kindergarten program to a school age program. This continuity of care in our high quality programs can be an important factor in the positive development of our students.

Community Day Learning School Age Programs:

Arlington • Bruce • Frost • Guilmette • Parthum • South Lawrence East • Tarbox • Wetherbee • Methuen