



# After School Program **UPDATE**

GUILMETTE SCHOOL

[www.communitydaycare.org](http://www.communitydaycare.org)

FALL 2016

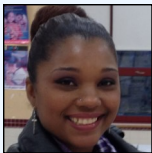
## Program Staff



**Wanda Gines**  
Director  
978.686.4098



**Carlos Figueroa**  
Assistant Director  
978.686.4098



**Anais Chilana**  
Site Coordinator  
978.807.5185

## About Our Programs

Community Day Learning (Community Day Care), is a program of The Community Group. CDA Beyond After School Enrichment Program represent a partnership between Community Day Learning and Lawrence Public Schools. Through our early learning centers and network of home care providers, Community Day Learning offers continuity of care from infancy through 12 years. Students enrolled in our infant/toddler program may progress to a preschool/kindergarten program to a school age program. This continuity of care in our high quality programs can be an important factor in the positive development of our students.

*"Education is the most powerful weapon which you can use to change the world."*

- Nelson Mandela

## Latchkey Enrichment Program

We had an exciting and eventful summer. The children in our programs had the opportunity to experience new things such as swimming lessons, sports, acting and singing, field trips, and even a special performance from Grooverysity, who performed some Salsa and Brazilian beats.

Since the start of the school year, we have welcomed several new staff members. At the South Lawrence East program, we welcome Rucherly Bollina as the educator of our older group, and Cheyminette Garcia as the educator for the younger group. The team at the Frost School program saw many changes, Lillian Santana joined us as the educator for group 1, Genesis Nin, the educator for group 3, Glenda Montiel, the educator of group 5, and Florisel Almonte for group 6. These staff members are joined by Beatriz Fret (group 4), Vanessa Espendez (group 3)

and Jasmine Hernandez. At our Parthum program, Esmeralda Fournier serves as the educator for group 2 and Marlene Paulino the educator for the younger group, group 1. In our Guilmette program, we welcome Joan Cruz who brings experience for group 3, our older students. It's great to see all of our programs expanding and offering additional enrichment opportunities for our students.

This year, the students will participate in a curriculum full of new experiences and opportunities. We will offer special clubs for all of our programs, including: "SPARK" physical activities, drumming, new physical games and acting out. One club we are very excited about is the Girl Scouts program, which girls in all of our programs will have the chance to participate. Another club we will offer at all our programs is soccer. The children will have lots of opportunity this coming school year and we are very excited to be part of it all!

## Extended Learning Time Program



Latchkey students were hard at work during Homework Club.

The Extended Learning Time program is in full swing at the Guilmette school! Focusing their enrichment programs around an African theme, students are creating their own African masks and instruments during African Art and making African legends come to life in Storytelling. Spark, our team building and cooperative play program is teaching students to move like jungle animals. And the African beats that are coming out of the Drumming class are incredible!

Community Day Learning School Age Programs:

Arlington • Bruce • Frost • Guilmette • Parthum • South Lawrence East • Tarbox • Wetherbee • Methuen



# After School Program **UPDATE**

**GUILMETTE SCHOOL**

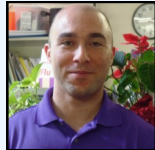
[www.communitydaycare.org](http://www.communitydaycare.org)

OTOÑO 2016

## Personal del Programa



**Wanda Gines**  
Directora  
978.686.4098



**Carlos Figueroa**  
Asistente Director  
978.686.4098



**Anais Chilana**  
Coordinadora del  
Local  
978.807.5185

## About Our Programs

*Community Day Learning (Community Day Care), is a program of The Community Group. CDA Beyond After School Enrichment Program represent a partnership between Community Day Learning and Lawrence Public Schools. Through our early learning centers and network of home care providers, Community Day Learning offers continuity of care from infancy through 12 years. Students enrolled in our infant/toddler program may progress to a preschool/kindergarten program to a school age program. This continuity of care in our high quality programs can be an important factor in the positive development of our students.*

*"La educación es el arma más poderosa que puedes usar para cambiar el mundo."*

*- Nelson Mandela*

## Programa de Enriquecimiento de Latchkey

Después de un verano emocionante y lleno de acontecimientos, donde los niños en nuestros programas tuvieron la oportunidad de experimentar cosas nuevas, como clases de natación, deportes, actuación y el canto, paseos, e incluso una actuación especial de Grooverysity, que realizó un poco de salsa y ritmos brasileños. Estamos entusiasmados con este próximo año escolar.

Desde el comienzo del año escolar, hemos recibido a varios nuevos miembros del personal. En el programa de South Lawrence East, damos la bienvenida a Rucherly Bollina como educadora de nuestro grupo de edad, y Cheyminette Garcia como educadora para el grupo más joven. Lillian Santana se unió a nosotros como educadora del grupo 1, Genesis Nin, la educadora del grupo 3, Glenda Montiel, la educadora del grupo 5, y Florisel Almonte para el grupo 6. Estos miembros del personal se unen por Beatriz Fret (grupo 4), Vanessa Espendez (grupo 3) y Jasmine Hernández.

En nuestro programa Parthum, Esmeralda Fournier sirve como educadora para el grupo 2 y Marlene Paulino la educadora para el grupo más joven, el grupo 1. En nuestro programa Guilmette, damos la bienvenida a Joan Cruz que trae experiencia con el grupo 3, nuestros estudiantes mayores. Es genial ver que todos nuestros programas se expanden y continúen creciendo.

Este año, los estudiantes participarán en un currículo lleno de nuevas experiencias y oportunidades. Ofrecemos clubes especiales para todos nuestros programas, incluyendo: "SPARK" actividades, tambores, nuevos juegos físicos y actuación. Un club que estamos muy emocionados es el programa de Girl Scouts, que las niñas en todos nuestros programas tendrán la oportunidad de participar. Otro club que estamos trabajando para llevar a todos nuestros programas es el fútbol. ¡Los niños de nuestro programa tendrán muchas oportunidades este próximo año escolar y estamos muy emocionados de ser parte de todo!

## Programas ELT

¡El programa Extended Learning Time está en pleno apogeo en la escuela Guilmette! Centrando sus programas de enriquecimiento alrededor de un tema africano, los estudiantes están creando sus propias máscaras e instrumentos africanos durante el arte africano y haciendo que las leyendas africanas tomen vida en la narración de cuentos. Spark, nuestro equipo de construcción y programa de juego cooperativo está enseñando a los estudiantes a moverse como animales de la selva. ¡Y los ritmos africanos que salen de la clase de Tambores son increíbles!



*Los estudiantes de Latchkey eran difíciles en el trabajo durante Homework Club.*

Community Day Learning School Age Programs:

Arlington • Bruce • Frost • Guilmette • Parthum • South Lawrence East • Tarbox • Wetherbee • Methuen