

THE COMMUNITY GROUP EARLY HEAD START CHILD CARE PARTNERSHIP PROGRAM

ANNUAL REPORT TO THE PUBLIC
JULY 2024 - JUNE 2025



“ The Early Head Start program has been amazing for my twin daughters. I noticed tremendous growth in their comprehension ability, vocabulary and social emotional skills. While they were enrolled in the program, I was referred to the Mentee program by my Family Advocate and got my certification as an assistant teacher.
- Elizabeth (EHS Parent) ”

OUR MISSION & BACKGROUND

The Community Group (TCG)'s mission is to create, manage and nurture high-quality programs focused on education and related services that support children, families and educators.

Established in 1970 as a preschool center to serve the child care needs of working families, TCG has steadily expanded its programs in response to the education, child care, training and enrichment needs of children and families in Lawrence and Methuen, MA. In 2015, TCG was awarded a five year Early Head Start Child Care Partnership (EHS-CCP) grant that brought EHS programming and funding into existing community-based early childhood programs. In 2024, TCG was awarded a third EHS-CCP grant in order to provide comprehensive EHS services to 72 children through enrollment in TCGs early education and care programs. These programs include Family Child Care homes, Community Day Early Learning Center and the Young Parent Infant/Toddler program at Lawrence High School. All 72 children are integrated into infant and toddler classrooms that meet Massachusetts Early Education and Care (EEC) licensing standards, while simultaneously benefiting from specialized services provided to EHS children. These services include comprehensive, health, nutrition and wellness programming, and case management, including assistance with medical, dental, mental health, employment, housing and other identified needs. The primary goal of TCG's EHS program is to nurture the relationship between the child and his or her parent(s) and to focus on the strengths of each and every family.

MARIA GONZALEZ MOELLER
Chief Executive Officer



ANNUAL OVERVIEW

The Early Head Start Child Care Partnership program at TCG provides comprehensive child development services for infants and toddlers in center-based and family child care (FCC) homes and works with families in achieving individualized goals that foster self-sufficiency while empowering caregivers to serve as their child's first and most important teacher. TCG's EHS-CCP team, 15 staff members, served 111 families over the year.

The field of early education and care continues to focus on physical, mental, and emotional wellness of children, families, and staff, strengthening and maintaining a healthy workforce, and collaborating across the state to ensure families have equitable access to high-quality care. Our community focused on these themes again this year, working together to continuously improve services, supports, and experiences offered to children and families to promote positive outcomes for all stakeholders.

In a new grant cycle, TCG's EHS-CCP program seeks to address systemic improvements, fortify community partnerships, and leverage expertise in the field to better support children and families.



“ The Early Head Start program ensured that my child was safe while I finished my high school diploma. I participated in parent committee meetings and was a member of the Policy Council. The program also connected me with many valuable community resources.
-Flor (EHS Parent) ”

ORGANIZATIONAL CHARTS

The Community Group Programs

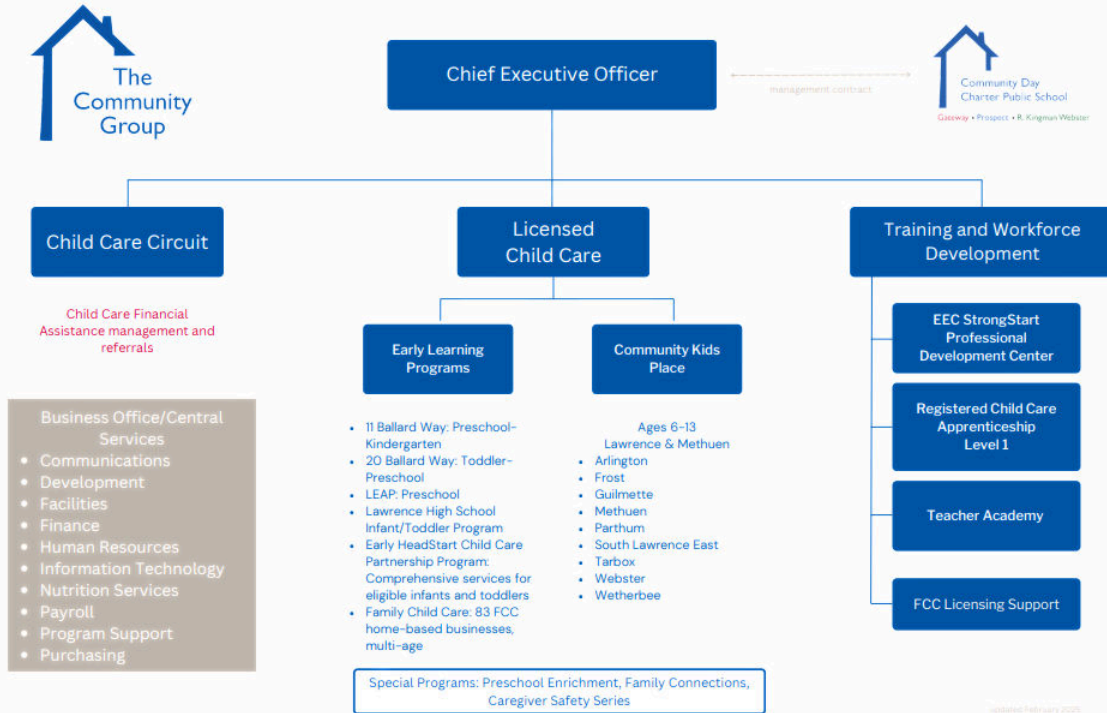
Licensed Child Care

Training and Workforce Development

Child Care Circuit

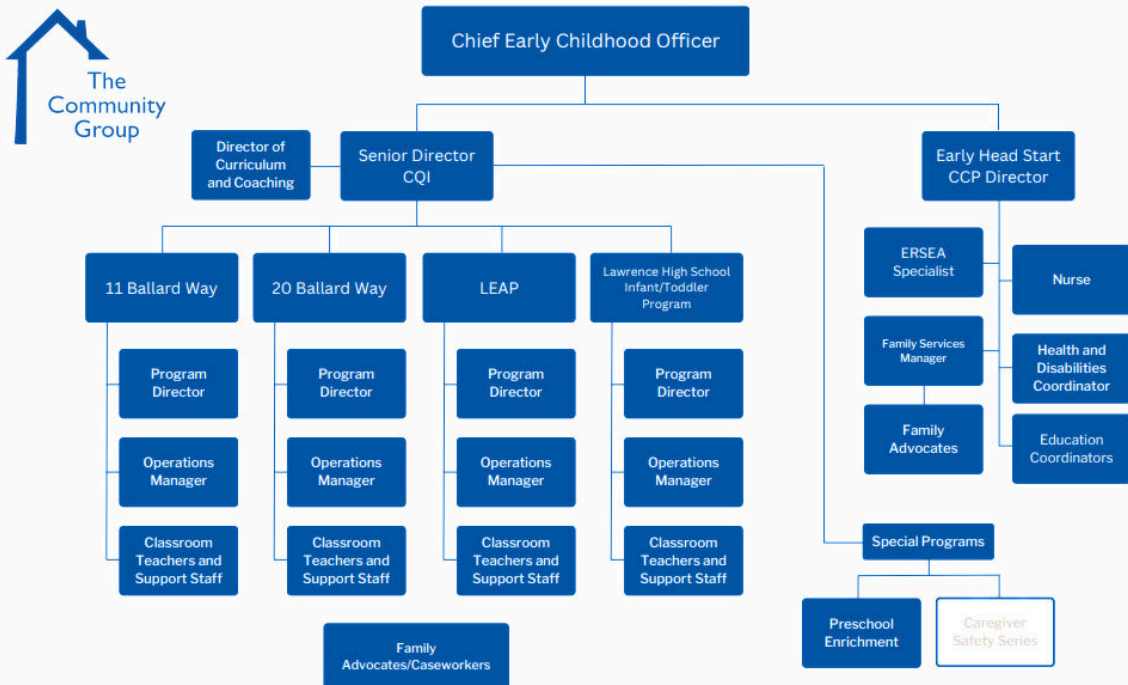
Community Day Charter Public School

Creating opportunities through education since 1970



The Community Group Early Learning Programs

Creating opportunities through education since 1970



OUR TEAM

ADMINISTRATIVE TEAM

- Allison Savary, EHS CCP Director
- Jackie Blakie, ERSEA Specialist
- Zoveyda Morel, Family Services Manager
- Sonia Cora and Vicky Garcia, Family Advocates
- Herolina Jimenez, Nurse
- Flerida Tejada, Health and Disabilities Coordinator
- Deanna Carter and Glendy Rivera, Education Coordinators

TCG PROGRAM PARTNERS

- Maria Gonzalez Moeller, CEO
- Grace Cruz, Chief Early Childhood Officer
- Janet Moro, Senior Director of Operations and CQI
- Yartiza Lopez, LHS Program Director
- Elayani Caraballo , 20 Ballard Way Toddler Director
- Roselee Audate, Chief of Program Supports
- Alba Soto, Director of Program Support
- Gisell Salcedo, Family Child Care Director

GOVERNANCE

TCG Board of Directors

- Ethel Cruz, TCG EHS Board Liaison

Policy Council

- Mayra Barilla, President
- Juana Medina, Vice president
- Angelica Cruz, Treasurer
- Euridisis Lara, Secretary
- Jennifer Carty Feliciano
- Jennifer Soto
- Mariel Pereyra
- Alondra Marte
- Helen Rodriguez
- Kiarra German
- Dinelia Cruz Mejia
- Mather Kamara



WHO WE SERVE



FAMILY NEEDS		CHILD NEEDS	
Transportation	34%	Foster Children	2%
Families Experiencing Homelessness	11%	Students with a Disability	42%
Children Receiving a Subsidy	100%	Multi-Language Learners	94%

LANGUAGES SPOKEN	ENGLISH ONLY	SPANISH ONLY	BOTH
Staff	10%	35%	55%
Children	17%	83%	7%

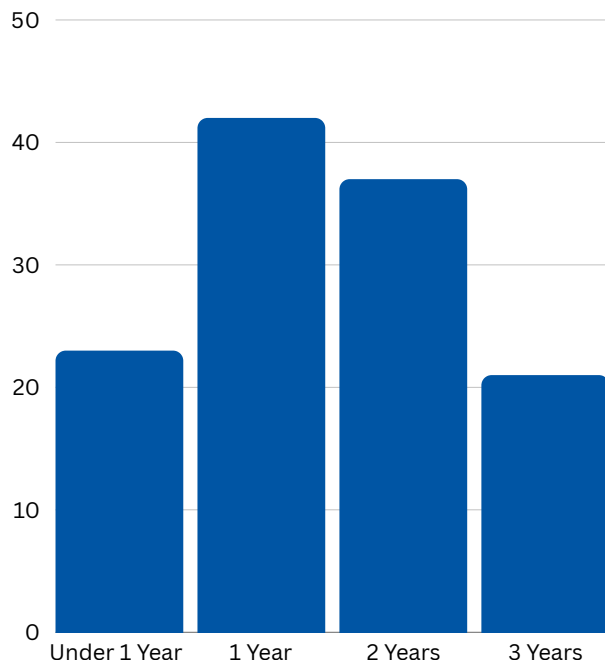
“ I am so happy that my child attends the Early Head Start program, I feel that my child is in the safest, and secure learning environment. The Early Head Start program has also helped me become a better mother and has even motivated me to continue my education in the medical field.
 -Angeline (EHS Parent) ”

ENROLLMENT



CHILDREN SERVED

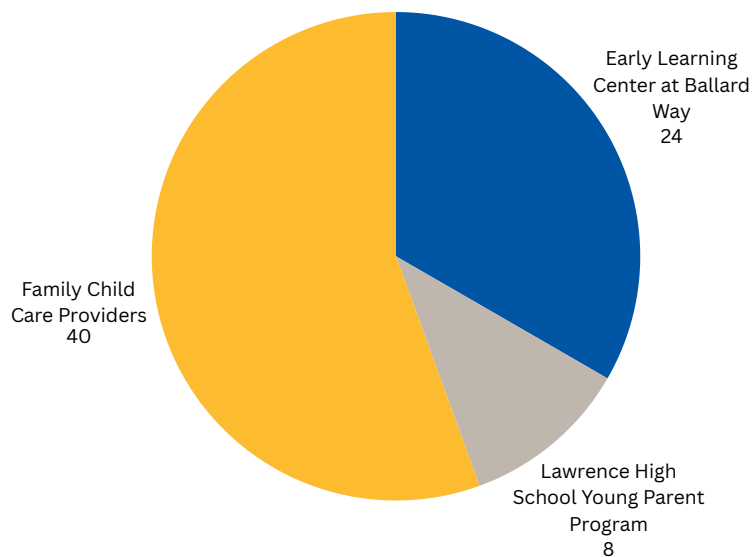
TOTAL: 123



AVERAGE
MONTHLY
TRANSITIONS

9

ANNUAL FUNDED ENROLLMENT



SCHOOL READINESS



TCG’s approach to school readiness is “children are ready for school, families are ready to support their children’s learning, and schools are ready for children.” There were no changes to our school readiness goals through June 30, 2025.

DOMAIN	CHILDREN WILL:
Social and Emotional	<ul style="list-style-type: none">• Engage in positive interactions through secure relationships with consistent known adults• Develop personal and playful relationships with other children• Manage, understand and express emotions• Begin to develop a sense of identity and sense of belonging to a family and group of peers
Approaches to Learning	<ul style="list-style-type: none">• Demonstrate interest and curiosity in the exploration of their environment• Show creativity and imagination in play, learning and interactions with others• Manage actions and behavior with the support of familiar adults

SCHOOL READINESS

DOMAIN	CHILDREN WILL:
Language and Literacy Development	<ul style="list-style-type: none">• Attend to, understand, respond to, and learn through communication and language experiences• Use nonverbal communication and oral language or a communication system (e.g., sign language) to express needs and wants and engage in conversation with others• Demonstrate basic literacy skills (e.g. recognizing pictures/symbols/words from stories)
Cognition	<ul style="list-style-type: none">• Use a variety of strategies to problem solve, including reasoning and planning ahead• Use beginning math concepts during daily routines and experiences, including sense of number and quantity, spatial awareness, and classification• Actively explore their environment to discover what objects and people do, how things work and how to make things happen.
Physical Well-Being and Motor Development	<ul style="list-style-type: none">• Develop control of large muscles for movement, exploration and self-help• Develop control of small muscles for exploration, play and daily routines• Begin to demonstrate healthy and safe behaviors with the support of an adult• Use perceptual information to guide actions in exploring objects, experiences and interactions

EVALUATIONS & ASSESSMENTS



CURRICULUM

- The Creative Curriculum for Infants and Toddlers
- The Creative Curriculum for Family Child Care
 - Ready Rosie – a dual-language parent curriculum

ASSESSMENT

- Teaching Strategies GOLD
 - Social-Emotional Development
 - Physical Development
 - Language Development
 - Cognitive Development

DEVELOPMENTAL SCREENING TOOLS

- Ages and Stages Social/Emotional 2
- Ages and Stages Questionnaire 3
 - Communication
 - Gross Motor
 - Fine Motor
 - Problem Solving
 - Personal-Social

DEVELOPMENTAL SCREENINGS

Screenings Completed 111	Evaluation Referrals 21	Evaluation Completed – Eligible for Service 14	Evaluation Completed – Ineligible for Service 4	Parent Declined 3
-----------------------------	----------------------------	---	--	----------------------

DIVERSE LEARNING NEEDS

Children Served 50	Autistic Children 8	Hearing Impaired Children 1	Non-Categorical Developmental Delay Children 41	IEP – 3 IFSP – 47
-----------------------	------------------------	--------------------------------	--	----------------------



MEDICAL & DENTAL

	Number of Children	Percentage of Total
Children with Health Insurance	123	100%
Children with Up-to-Date Physical Exams	119	97%
Children with Up-to-Date Immunizations	119	97%
Children with a Dental Home	122	99%
Children Up-to-Date on Preventative and Primary Oral Health	103	84%

FAMILY ENGAGEMENT

This program year, the EHS team worked hard to support families in a variety of ways, including through health education workshops on topics like dental hygiene, preparing health documents, common winter illnesses in children, car seat safety and fire safety.



FAMILY ENGAGEMENT IN NUMBERS

Policy Council Members	13
Average Parent Committee Attendance	10
Average Workshop Attendance	15
Family Need Referrals	98
Families Completing Home Curriculum Activities	118

NUMBER OF FAMILIES

Two Parent-Families	10
Mother-Only Families	97
Father-Only Families	1
Grandparents	1
Foster Families	2

“The Early Head Start program helped me so much during a difficult time in my life. The staff was friendly, helpful and accommodating to my situation. I will forever cherish the knowledge I obtained while attending Parent committee meetings and Policy Council Meetings.
-Jennifer (EHS Parent)”

TRAINING AND TECHNICAL ASSISTANCE

TCG’s EHS–CPP offers regular opportunities for professional learning, to all staff, to support continuous quality improvement and positive child and family outcomes. Each program year, EHS staff engage in robust professional development and training across multiple domains.



General Program		Family Outcomes
Quality of Care for Infants and Toddlers (QCIT) Renewal Training	Mandated Reporter Training	Addressing Infant and Toddler Behavior that Challenges Adults
Diagnostic Classification of Mental Health and Developmental Disorders	Observation and Assessment in Teaching Strategies GOLD	Counseling Skills and Techniques
Mental Health First Aid	Fostering Relationships by Embracing/Elevating Curiosity	Emergency Planning Preparation
Supporting Children with Autism in Preschool	Removing Barriers - 5 Modules	Supporting Infants Development
CPR & First Aid	Health Literacy for Early Head Start	Supporting Healthy Eating for Head Start Children and Families
EEC Essentials 2.0	Home at Head Start (ERSEA Institute)	Promoting Positive Guidance
Child Outcomes		
Helping Children Thrive: Strategies to Improve Children’s Mental Health	Supporting Preschool Learning with ASL	Autism Spectrum Disorder: Signs, Screening, Diagnosis and Strategies
Working with Dual Language Learners	Fed is Best: Nourishing Infants and Toddlers in Partnership with Families	Bone Health for Child Care
Identifying Developmental Delays	Lead Training	Implementing the Pyramid Model: Promoting Social-Emotional Skills

FINANCIAL OVERVIEW

“ My family and I will forever be grateful for the Early Head Start program; we were able to work while our girls were well taken care of. I also received so much support, and gained valuable insight into Early Learning education by becoming a part of the Policy Council. ”
 -Alondra (EHS Parent)



EHS Annual Funding Report		
Funding Source: Department of Health and Human Services		
	Actual FY25 (Jul 24–Jun 25)	Projected FY26 (Jul 25–Jun 26)
	Amount	Amount
Early Head Start Partnership Funds	\$1,325,987	\$1,436,730
Training & Technical Assistance	\$24,936	\$27,660
Total Federal EHS-CCP Grant Funding	\$1,350,923	\$1,464,390
EHS State Supplemental Grant (Non-federal Share)	\$140,812	\$152,408
TOTAL:	\$1,491,735	\$1,616,798

Early Head Start Partnership Expenses			
	Actual FY25 (Jul 24–Jun 25)	Projected FY26 (Jul 25–Jun 26)	Rationale
Personnel	\$670,983	\$669,706	Salaries for EHS and TCG staff at 11.71 FTE
Fringe Benefits	\$195,039	\$219,833	Payroll taxes, workers comp, health & life insurance, benepass, pension
Supplies	\$82,073	\$73,499	Formula, diapers, supplies and materials
Contractual - FCC	\$193,575	\$278,604	Daily rate offset for EHS FCC providers
Contractual - Other	\$45,408	\$47,160	Mental health services
Other	\$138,177	\$150,548	Family engagement, T&TA, facilities, transportation
Indirect	\$166,480	\$177,448	
TOTAL:	\$1,491,735	\$1,616,798	
Non Federal Share Obtained	\$184,678	TBD	
Non Federal Share Required	-	\$366,098	

A LETTER FROM THE DIRECTOR

Dear Friends and Supporters,

It is my honor to present the 2024–2025 Early Head Start Child Care Partnership Annual Report. Each year, our work is anchored in a shared commitment to children, families, and educators—and this year was no exception. Our Early Head Start team continues to provide meaningful learning experiences, strong relationship-building opportunities, and comprehensive supports that lay the foundation for lifelong success. This report reflects the collective efforts of our staff, families, and community partners who work together to promote school readiness, strengthen family well-being, and advance our program goals.

Our program's impact is made possible by our dedicated team and the invaluable partnerships that support our work. The Family Services team remained focused on strengthening family development through workforce support, child development guidance, and financial literacy resources. Our Education Coordinators continued to provide individualized coaching and curriculum support to educators, helping ensure that every classroom environment and learning experience aligns with high-quality early childhood standards. Our Health Manager and Nurse worked closely with families to share screening results, coordinate medical and dental care, and provide ongoing support for children's health and wellness needs. In addition, our team collaborated with local Early Intervention agencies to ensure timely referrals and services for children with identified developmental needs.

Guided by The Community Group's mission, we remain committed to creating, managing, and nurturing programs that elevate early learning and strengthen families. As we enter a new program year, we look forward to building on our progress—expanding partnerships, enhancing services, and pursuing continuous improvement so that all children and families in our community have the opportunity to thrive.

Thank you for your continued support, partnership, and trust in our work.

ALLISON SAVARY
DIRECTOR OF EARLY HEAD START
CHILD CARE PARTNERSHIP





COMMUNITIES SERVED

Lawrence, MA

Methuen, MA

PARTNERS

- Community Giving Tree
- Debbie's Treasure Chest
- Family Services of the Merrimack Valley
- Greater Lawrence Community Action Council
- Lawrence Public Schools
- Lawrence Housing Authority
- Mass Hires
- Mission of Deeds
- Mentor Early Intervention
- Merrimack Valley Immigration Center
- Methuen Public Schools
- Neighbors in Need
- Norther Essex Community College
- Partners in Child Development
- Project Home Again
- Ruth's House
- Salvation Army
- Toys for Tots
- WIC

